



**WARNING • KEEP OUT OF REACH OF CHILDREN**  
Ecotoxic. Shake Well Before Use



**Key Industries**

Protecting people, crops and native species

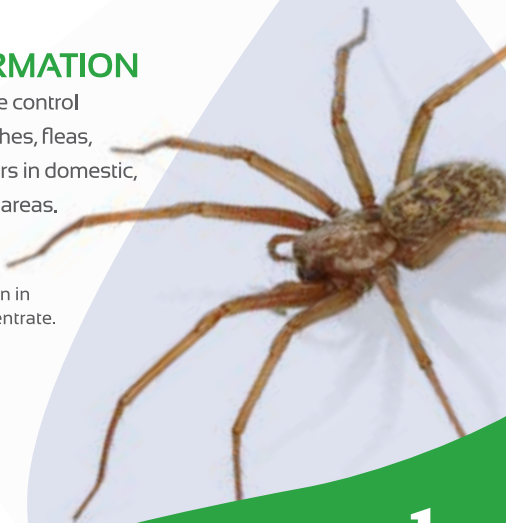
# Key Delta<sup>TM</sup> Aqua Insecticide

## GENERAL INFORMATION

A residual insecticide for the control of ants, bed bugs, cockroaches, fleas, flies, mosquitoes and spiders in domestic, industrial and public health areas.

## ACTIVE INGREDIENTS

Contains 25g/litre deltamethrin in the form of a suspension concentrate.



<sup>TM</sup> Key Delta is a trademark of Key Industries Ltd, Auckland.

Manufactured & Distributed by  
**Key Industries Ltd**  
15D Paul Matthews Road, Rosedale, Auckland  
PO Box 65-070, Mairangi Bay, Auckland 0754.

Tel 09 917 1791 Fax 09 917 1793  
Web [www.keyindustries.co.nz](http://www.keyindustries.co.nz) Email [sales@keyindustries.co.nz](mailto:sales@keyindustries.co.nz)

**1L**

# Key Delta<sup>TM</sup> Aqua

**Read label before use. Do not handle until all safety precautions have been read and understood.**

**HAZARD CLASSIFICATIONS:** 6.1D, 6.9B, 9.1A, 9.3B, 9.4A



**TOXICITY WARNING:** THIS SUBSTANCE MAY BE HARMFUL IF SWALLOWED. Repeated minor exposures may have cumulative effects. Do not inhale the spray mist. Do not eat, drink or smoke while using. Remove protective clothing immediately after handling this product and wash hands and face before meals and after work. Wash contaminated clothing before reuse

**MAY CAUSE ORGAN DAMAGE** from repeated oral exposure at high doses.

**SKIN CONTACT MAY CAUSE TEMPORARY NUMBNESS**  
Avoid contact with eyes and skin.

## ECOTOXICITY:

**VERY TOXIC TO AQUATIC ORGANISMS. DO NOT** contaminate any water supply with chemical or empty container. **DO NOT** spray over or allow to drift over an aquatic environment.

**TOXIC TO TERRESTRIAL VERTEBRATES SUCH AS BIRDS AND REPTILES.**

**VERY TOXIC TO TERRESTRIAL INVERTEBRATES.** Do not spray over bees or apply to plants in flower. Do not spray over beneficial predators.

## HANDLING PRECAUTIONS

**STORAGE:** Store in the original container tightly closed and in a locked, dry, cool and well ventilated area – well away from foodstuffs. Storage must be generally in accordance with NZS8409.

## PERSONAL PROTECTION

When mixing or applying, wear eye protection, chemical resistant gloves (e.g. PVC or neoprene), chemical resistant boots, waterproof hat and cotton overalls buttoned to the neck and wrist. When applying this product above 1m height an approved half/full face filter respirator for organic vapours should be worn. When spraying Key Delta Aqua below 1m height use a P2 disposable facemask as minimum respiratory protection.

## DISPOSAL

Triple rinse empty container and add rinsate to spray tank. Do not burn empty container that has not been rinsed. Recycle triple rinsed containers through an approved recovery scheme, eg Agrecovery. Otherwise, crush or puncture and bury in a suitably approved landfill.

Dispose of this product only by using according to the label, with an approved waste disposal company or treat so that it is no longer hazardous and then dispose of safely in a managed landfill. Do not burn the product.

Dispose of equipment cleaning water onto ground away from susceptible crops and plants.

## SPILLAGE

Exclude all bystanders, prevent material entering waterways and coming into contact with other products. Wear appropriate protective clothing to clean up spills. Absorb spills with an inert (such as vermiculite, earth, sand or synthetic absorbent substance) material and place in waste containers. Wash area with a bleach solution (sodium hypochlorite) then absorb any remaining liquid with further inert material. Dispose of waste with an approved waste disposal company.

## FIRST AID

If medical advice is needed, have product container or label at hand. If swallowed do not induce vomiting. For advice contact the National Poisons Centre 0800 POISON (0800 764 766) or a doctor immediately. If splashed in eyes, remove contact lenses if present and easy to do, flush eyes with water for at least 15 minutes and see a doctor. If inhaled, move victim to fresh air immediately. If breathing has stopped, begin artificial respiration. Use mouth-to-nose rather than mouth-to-mouth. If skin or hair contact occurs, remove contaminated clothing and flush skin and hair with running water and soap.

## NOTICE

**Important:** You **must** read the warning and conditions given on this label. If they are not acceptable, or if you are in doubt as to the proper handling of this product (including its transport, storage, use, disposal, and requirements for approved handlers) then return the unopened product to the supplier at once.

## Warning:

This product is subject to controls and could be hazardous if handled incorrectly. The **user is responsible** for ensuring that the handling of this product is in accordance with the law (including the **Hazardous Substances and New Organisms Act 1996**) and with the directions provided. Key Industries Limited declines all liability whether in contract, tort (including but not limited to negligence), (or otherwise), to the maximum extent permitted by law in relation to the handling of this product in a manner which is contrary to the directions given or to any applicable Acts, Regulations or Guidelines. **Further information** regarding the applicable Acts, Regulations and Guidelines for the proper handling of this product may be obtained by contacting EPA New Zealand ([www.epa.govt.nz](http://www.epa.govt.nz)). This product is warranted to contain the specified active ingredient within accepted analytical tolerance when packed.

MPI Approved type B (all animal products except dairy)

AssureQuality approved Category B& C Food/beverage/dairy factory and storage areas (Category B point apply)

**HSNO Approval Code:** HSR007978

**UN NUMBER:** UN3082, ENVIRONMENTALLY HAZARDOUS SUBSTANCE, LIQUID, NOS (contains deltamethrin)

**DG Class:** 9

**Packing Group:** III

PEEL HERE



**Where to apply:**

**Ants** - nests, runs, walls, drains and resting places wherever ants are seen.

**Cockroaches** - walls, skirting boards, cupboards, behind sinks, stoves and pipes. In particular, cracks and crevices.

**Fleas** - floors, carpets, skirting boards, kennels, bedding and adjacent wall area.

**Flies and Mosquitoes** - walls, skirting boards and all exposed surfaces where these flying insects may rest.

**Spiders** - nests and known hiding places, and exposed surfaces where spiders are seen.

**Silverfish** – Locate the source of the infestation and spray. If it cannot be located spray all the surfaces on which silverfish travel, especially inside cupboards.

**Carpet Beetles** – Thoroughly wet the infested carpet area so that spray solution penetrates the carpet pile. Removal of furniture or soft furnishings to gain access to infested areas may be necessary to obtain good control

**Important - Food contamination**

- Do not allow spray to contact food, food preparation surfaces or food utensils.
- Remove or cover all foodstuffs before application.
- Do not use in areas where edible dairy or meat products are processed, packed or stored.
- Do not use where food-packaging materials (cartons, liners etc) are stored or assembled.
- Do not use near air vents or ducts in food stores or processing plants while they are in operation.
- Wash all food contact surfaces thoroughly before reintroducing any foodstuffs.

**DIRECTIONS FOR USE**

Residual control for up to 6 weeks may be obtained, depending on the insect pest, application rate and the nature of the treated surface.

Surface spray only - do not spray into the air.

Always ensure premises are adequately ventilated following application and an appropriate stand down time is followed before re-entry, eg 3-4 hours ventilation of domestic buildings before re-entry.

Situations	Insect Pests	Rates (ml/100m <sup>2</sup> )	Critical Comments
Houses, flats, factories, shops, warehouses, restaurants, meat and dairy processing plants.	Ants, cockroaches, fleas, flies, silverfish, carpet beetle, mosquitoes and spiders.	<b>Initial treatment:</b> 60ml per 100m <sup>2</sup> in up to 5 litres of water	Apply as a coarse spray at 60mls per 100 square metres with up to 5 litres of water. NOTE: the water rate will vary depending on the surface that you treat, eg porous or non porous. The correct use rate of the product per square metre is critically important for performance.
	Bedbugs	60ml per 100m <sup>2</sup> in up to 5 litres of water	Apply to the bed-frame, head boards, curtain tracks, curtains, side tables, picture frames, leg holes, under sacking of beds, fittings around bed, walls, cracks, crevices, skirting boards and any fittings (e.g.; lights) on walls closest to bathrooms in the vicinity of beds. May also be applied to the edges and seams of the mattress but do not treat the flat surfaces which people sleep on.  Note: Many populations of bedbugs have developed resistance to synthetic pyrethroid chemicals. Consider using an alternative chemical group if resistance is suspected.
Product can be applied with a knapsack sprayer or other conventional spray equipment used to control public health pests, eg mister			