

DANGER
KEEP OUT OF REACH OF CHILDREN

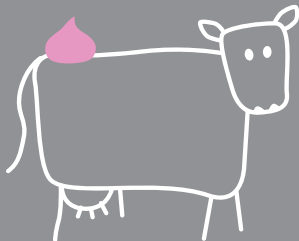


▶ MARKERS

FOAM MARKER

Coloured foam marker

For use as a temporary marker to identify animals which are to be drafted out



EXTREMELY FLAMMABLE AEROSOL, UN 1950.

Net Contents 265mL

Shake well before use

DIRECTIONS FOR USE

Foam Mark should be sprayed in one spot on the top of the animals back or hip. Shake can well before use. Hold the can approximately 15cm from the animal and spray for 2-3 seconds. Soon after spraying the foam will rise to form a coloured blob which is easily seen from a distance, particularly in poor light. After a short period (approximately 30 minutes depending on conditions) the foam spot will disappear.

HAZARD STATEMENTS

Extremely flammable aerosol. Causes serious eye irritation and mild skin irritation. Beware: Deliberately sniffing or inhaling concentrated spray can be harmful or fatal.

PREVENTION STATEMENTS

Read label before use. Keep away from heat/sparks/open flames or hot surfaces. No smoking. Do not spray on an open flame or other ignition source. Pressurised container: Do not pierce or burn, even after use. Wear protective gloves/protective clothing/eye and face protection. Wash hands and exposed skin thoroughly after handling.

RESPONSE STATEMENTS

If medical advice is needed, have product container or label on hand. IF IN EYES: Rinse cautiously with water for several minutes. Remove contact lenses, if present and easy to do so. Continue rinsing. If eye irritation persists: get medical advice. If skin irritation occurs: Get medical advice.

STORAGE STATEMENTS

Protect from sunlight. Do not expose to temperatures exceeding 50°C.

DISPOSAL STATEMENTS

Dispose of empty containers and product safely-do not puncture or burn. Avoid contamination of any water supply with product or empty container.



FIL is a wholly owned subsidiary of GEA Farm Technologies, 72 Portside Drive, PO Box 4144, Mt Maunganui, New Zealand

BARCODE

4741-601

TEL +64 7 575 2162 FREEPHONE NZ 0508 434 569 WWW.FIL.CO.NZ